

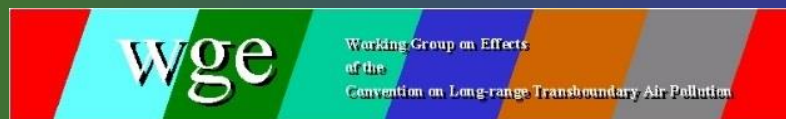
Für Mensch & Umwelt



Umwelt 
Bundesamt

JOINT TASK FORCE ICP WATERS AND ICP INTEGRATED MONITORING
4-6 JUNE 2019, HELSINKI

ICP MM TF and CCE Common vision and perspective Progress on actions



The Chairing of the TF is (still) located at INERIS, France

- Main mission : assessment and management of environment and health risks issued from industrial activities
- A few figures :
 - Multidisciplinary teams
 - Headquarters : 50 ha
 - Laboratories : 25 000 m²
 - Full scale tests facilities
 - Staff :
 - 500 pers., including 350 engineers and researchers
 - 50 Phd students



The CCE is now located in Dessau-Roßlau, Germany!



Report on recent CCE activities during transition

FORMAL & ADMINISTRATIVE ISSUES

EXECUTIVE BODY DECEMBER 2017 ([ECE/EB.AIR/140](#))

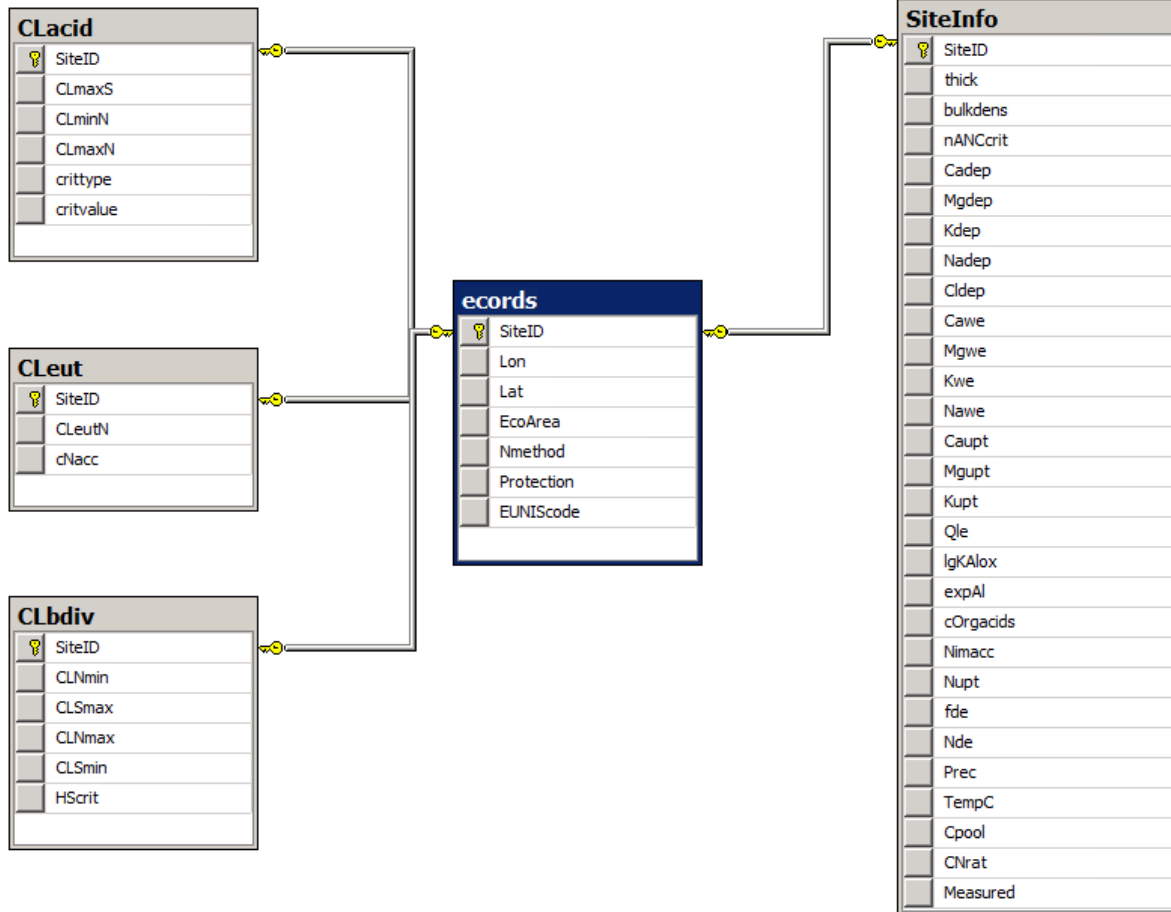
- Thanks Netherlands for hosting the CCE for the past 27 years
- Thanks Germany for taking over
- Memorandum of understanding between UBA and CLRTAP secretariat ready for signature
- work plan 2019 agreed at EB 2018 ([ECE/EB.AIR/142](#)) IV A 18. (h)
- Revised mandate under preparation with TF for discussion at the ICP M&M Meeting in Madrid
- Administration of coordination costs and personnel matters at UBA

WEBSITE

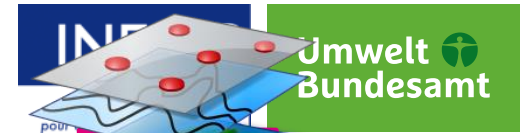
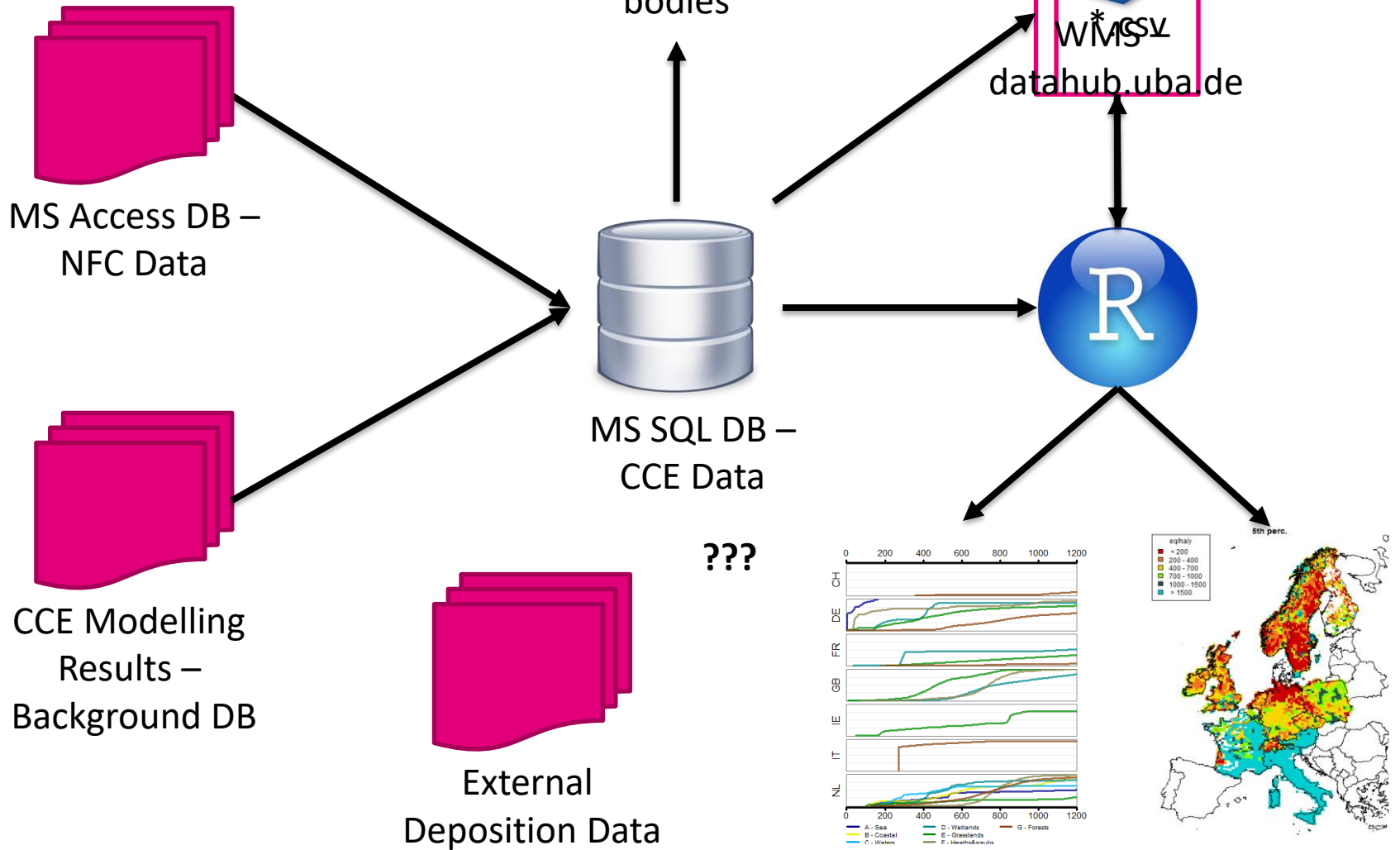
- New CCE website has been set up under: <https://www.umweltbundesamt.de/en/cce>
- Mailing under: cce@uba.de
- Data, reports, manual for the time being at CCE

- (i) Adapt existing IT Infrastructure and software at the German Environment Agency to fulfil **data handling and communication** tasks (2018–2019): set up of necessary storage capacities, set up of necessary web-space, review of the CCE background database on critical loads (CL), implementation of R-based calculations to perform CL calculations and mapping;
- (ii) Develop framework and skills to improve the **information exchange between CCE and National Focal Centres** (NFCs; 2019): continue the collaboration on the “**Call for data**” on critical loads from 2017, develop new assessment tasks together with National Focal Centres, find common understanding for data-handling and presentation;
- (iii) Start the **collaboration** with the **ICP Modelling and Mapping** and **other bodies of the Convention** (2018–2019): conduct consultation meetings between the Chair of the Task Force of ICP Modelling and Mapping, co-preparation and realisation of the ICP Modelling and Mapping **meeting in Madrid** (together with the Task Force of the ICP Modelling and Mapping), prepare and conduct meetings with the Centre for Integrated Assessment Modelling/the International Institute for Applied Systems Analysis, the Meteorological Synthesizing Centre -West, the ICP on Assessment and Monitoring of Air Pollution Effects on Forests (ICP Forests) and the ICP on Effects of Air Pollution on Natural Vegetation and Crops (ICP Vegetation) to **build up a cooperation network** within the Convention.

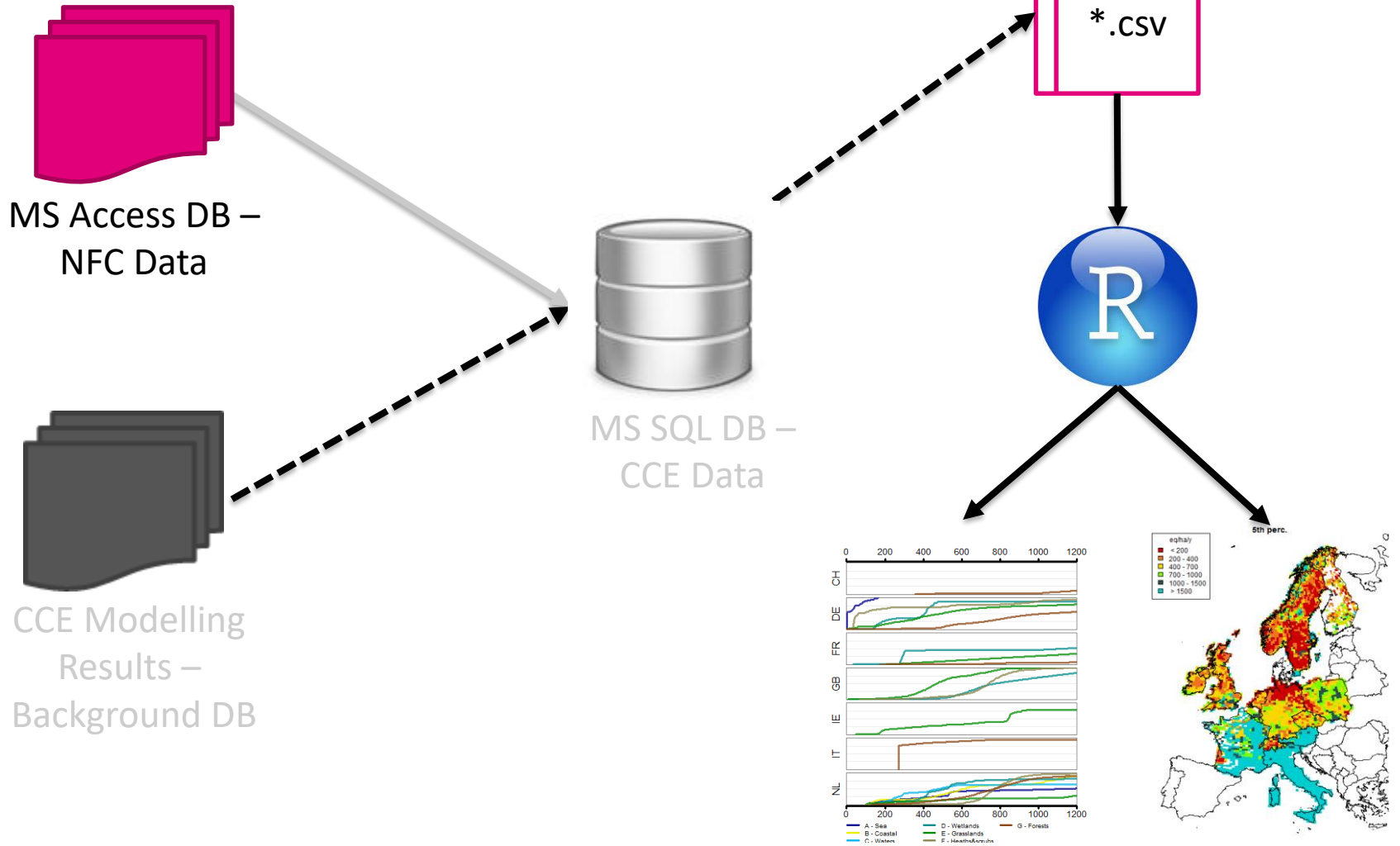
DB – Structure : Call for data 2015-2019



CCE - Workflow:



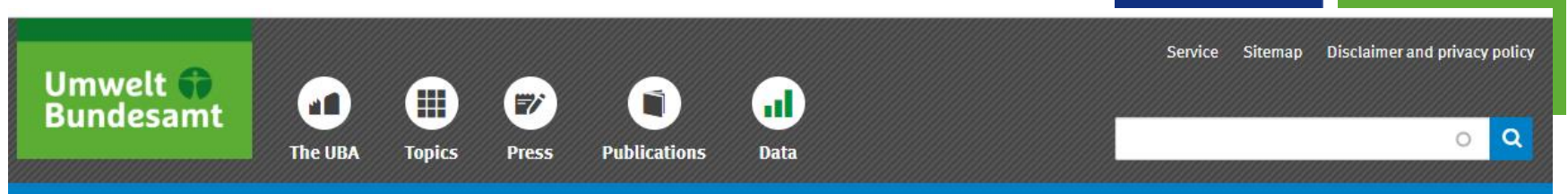
CCE - Workflow:



Conclusions:

- Urgent need to update the CCE Background DB
- Project description will soon be finalized (Project time frame 2019-2020) €€€
- NFC are welcome to participate and share expertise
- Structured discussion about SMB Parameters should be revived

Workplan item (i)



Home > Coordination Centre for Effects (CCE)

[Home](#) [Data & Models](#) [Manual](#) [Publications](#) [NFC](#)



Coordination Centre for Effects (CCE)

The CCE is pleased to welcome you to its new website! In 2018 the CCE was transferred to the German Environment Agency (UBA, located in Dessau) from the Dutch National Institute for Public Health (RIVM), where it was established in 1990.

The objectives of the CCE are 1) to develop and update the methodologies enabling the assessment of critical loads; 2) to compile national data on critical loads into a European database; 3) to generate maps of European critical loads and their exceedances and to provide the results to the relevant bodies under the Convention on Long-range Transboundary Air

Contact

Coordination Centre for Effects

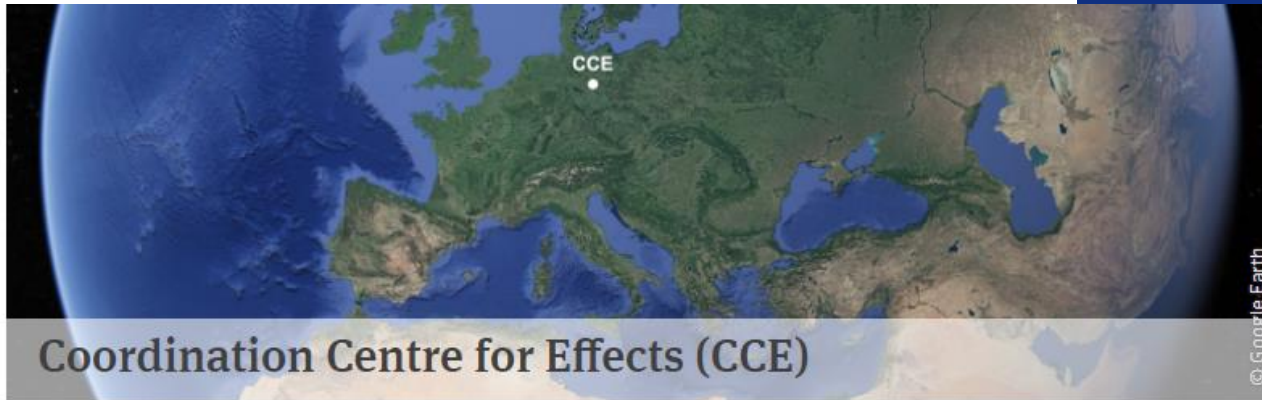
✉ cce@uba.de

German Environment Agency

Section II 4.3 - "Air Pollution and Terrestrial Ecosystems"
Wörlitzer Platz 1
06844 Dessau
Germany

www.Umweltbundesamt.de/en/cce,

www.uba.de/en/cce



Coordination Centre for Effects (CCE)

The CCE is pleased to welcome you to its new website! In 2018 the CCE was transferred to the German Environment Agency (UBA, located in Dessau) from the Dutch National Institute for Public Health (RIVM), where it was established in 1990.

The objectives of the CCE are 1) to develop and update the methodologies enabling the assessment of critical loads; 2) to compile national data on critical loads into a European database; 3) to generate maps of European critical loads and their exceedances and to provide the results to the relevant bodies under the Convention on Long-range Transboundary Air Pollution (CLRTAP), especially for the purpose of policy support through integrated assessment. In order to perform these tasks, the CCE collaborates with a European network of National Focal Centres (NFCs) of the International Cooperative Programme on Modelling and Mapping of Critical Levels and Loads and Air Pollution Effects, Risks and Trends (ICP M&M).

Extension of Call for Data (2015/2017) until February 2019

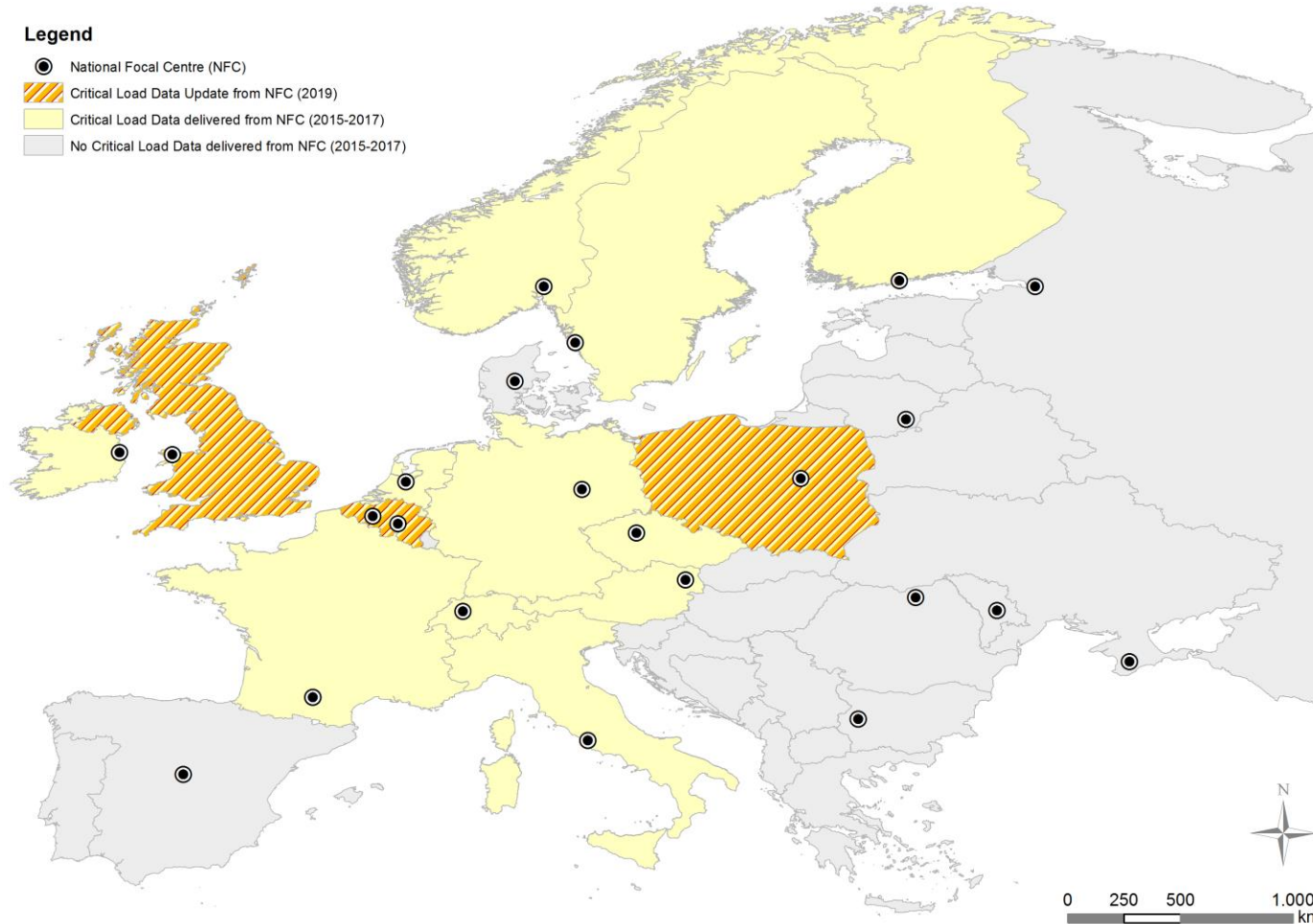
We are pleased to inform that the current call for data has been extended until **28 February 2019**. All NFCs are kindly asked to review their submissions to the CCE and revise as necessary. The instructions and the data format are identical to those in the Call for Data 2015-2017 and can be downloaded from the following links:

- [Extension of the Call for Data until February 2019](#)
- [Call for Data 2015-2017](#)
- [SMB Access database template](#)

Call for Data 2015-2017 / Extension 2019

Legend

- National Focal Centre (NFC)
- ▨ Critical Load Data Update from NFC (2019)
- Critical Load Data delivered from NFC (2015-2017)
- No Critical Load Data delivered from NFC (2015-2017)



Call for Data 2015-2017 / Extension 2019

Tab. 1: Submitted total ecosystem area (km²) per a country

Country	Eutrophication	Acidification	Biodiversity
Austria	50.588	38.957	-
Belgium	5.642	5.447	-
Czech Republic	6.396	6.396	-
Finland	41.141	286	-
France	177.006	177.006	177.006
Germany	106.976	106.976	106.976
Ireland	18.320	13.516	345
Italy	105.946	101.030	-
Netherlands	5.428	3.748	3735
Norway	304.028	320.450	-
Poland	96.858	96.858	-
Sweden	58.688	395.226	-
Switzerland	24.248	9.733	76
United Kingdom	72.811	77.412	5738

Call for Data 2015-2017 / Extension 2019

Tab. 1: Submitted total ecosystem area (km²) per a country

Country	Eutrophication	Acidification	Biodiversity
Austria	50.588	38.957	-
Belgium	5.642	5.447	-
Czech Republic	6.396	6.396	-
Finland	41.141	286	-
France	177.006	177.006	177.006
Germany	106.976	106.976	106.976
Ireland	18.320	13.516	345
Italy	105.946	101.030	-
Netherlands	5.428	3.748	3735
Norway	304.028	320.450	-
Poland	96.858	96.858	-
Sweden	58.688	395.226	-
Switzerland	24.248	9.733	76
United Kingdom	72.811	77.412	5738

Updates
2019

Report on recent CCE activities during transition

MEETINGS FOR TRANSITION

- INERIS: define collaboration, next necessary steps
- RIVM: Website-Transfer, Data-Transfer (NFC-data, background-database), knowledge-transfer
- Max Posch (IIASA): knowledge-transfer (bgdb, exceedance calculation)

WGE EXTENDED BUREAUX MEETING, Laxenburg

- Represent CCE
- Found common understanding CL-Exceedance Calculation for Policy Advice

INFORMAL MEETINGS

- PCC (collaboration, databases)
- US-EPA (CL Mapper)
- JRC Ispra (use of CL as indicator for biodiversity strategy)
- Involvement into Skype-Meeting on common WGE web portal

COMMUNICATION WITHIN ICP M&M

- Contact letter to National Focal Centers
- Extension of the Call for Data (2015/2017) until February 2019, first evaluation
- New starting point: Madrid 2-4 April 2019 defining future forms of collaboration: WELCOME!

COMMON PRIORITY TASK

- Keep ICP M&M data relevant to describe threats for ecosystems by air pollution
 - for policy makers (upcoming GP review)
 - the interested public (reports, brochures)
 - and the scientific community (publications)

NEW “YOUNG” TEAM AND CHAIRMANSHIP

- Fresh activity, motivated for collaboration
- Restart, new ideas, new visions?
- Long term continuity ahead, stable basis could be built up
- First task is to discuss a **common mandate**

MANDATE – Revised mandate (sept. 2019) will include key objectives and functions of the TF and centers

- TF (community of National Focal Centres, NFCs)
 - organizes and evaluates the Programme's activities. It reviews and assesses methodologies and databases
- CCE
 - Collaboration with other convention and research groups
 - Reports, database, clearing house, Workshops
 - Develop methodologies and databases for the calculation of critical loads and their exceedances
- Parties (NFCs)
 - Key role
 - ICP M&M activities based on the contributions of the participating parties, either through their NFCs or, in some cases, through informal submissions
 - Data collection, contribution to development of methodologies

MANDATE – *New structure ? New center ?*

- Suggestion to transform Joint Expert Group on Dynamic Modelling (JEG DM) to **Center for Ecosystem Dynamics (CED)** under the umbrella of ICP M&M
 - Next Joint EMEP/WGE annual meeting (Geneva, September 2019) : a combined mandate with ICP M&M and CCE will be presented
 - Next EB CLRTAP Meeting (Geneva, December 2019) : decision will be taken by the EB on whether to create the CED
- Next step : A detailed discussion on the mandate will take place 11th of June between ICP M&M, CCE, CED and the chairs of WGE and EMEP.

MANDATE – *Examples of tasks undertaken by CED*

- to develop and apply methods for effect-based approaches, including dynamic modelling (DM) and the modelling of impacts on suitable indicators of biodiversity and its services in collaboration with other ICPs;
- to develop understanding of timescales and time lags of response to changes in air pollution and to design ways of exploring the dynamic models describing the response over time for policy purposes
- to promote participation from all parties and relevant LRTAP Convention bodies and seek ways in which knowledge and information collectively gathered can be used in the common framework of dynamic models
- Facilitate and be an entry point for co-operation between CLRTAP and research groups and organizations outside CLRTAP (e.g. LifeWatch and LTER) to increase visibility and widen the use of results of monitoring and modelling achieved by ICP M&M specifically and within WGE in general in a cost-effective way.

PROPOSAL TO THE ANNUAL ICP M&M MEETING FOR MOST URGENT SCIENTIFIC QUESTIONS

ENHANCE COLLABORATIVE CHARACTER, RESTRUCTURE ICP M&M?

- Expert Panels
- Stronger separation of topics, each of them scientifically challenging
 - Steady-state Modelling : gap filling ?
 - Empirical Critical Loads : update ?
 - CL for biodiversity : how to move on ?

CONSENSUS REACHED AT THE ANNUAL ICP M&M MEETING

MOST URGENT SCIENTIFIC QUESTIONS

- Steady-state Modelling
 - Gap filling process and cross-border harmonisation to begin with
- **Empirical Critical Loads**
 - **Update of empirical Critical Loads** **Link ICP W/IM activities & data ?**
 - **ICP MM asks WGE to issue a call for contribution to support the process of the revision on empirical CL**
- CL for biodiversity
 - NFCs are encouraged by ICP MM to carry on the process of developing CL biodiversity – link with JEG DM group inclusion within ICP M&M

CONSENSUS REACHED AT THE ANNUAL ICP M&M MEETING

CALL FOR DATA

- ICP MM asks WGE to issue a CfD to NFCs
- Linked to potential revision of GP (2012)
 - 2-year timeline until 2021
 - deliverables
 - Steady-state Modelling – input data for IAM
 - Empirical CL – input data for IAM
 - Biodiversity CL – method development

CONSENSUS REACHED AT THE ANNUAL ICP M&M MEETING

COLLABORATIVE ISSUES

- Inside ICP M&M – Among NFCs
 - CCE facilitates more regular communication among NFCs (e.g. newsletter)
- Outside ICP M&M
 - CCE facilitates external communication on activities (e.g. joint reports and publications, brochures)
 - ICP MM encourages intensive exchanges with other bodies (other ICPs, monitoring groups outside the convention)

[Link ICP W/IM activities & data](#)

PERSPECTIVES – COLLABORATIVE ISSUES

- ICP M&M and CCE are looking forward to fruitful collaboration with ICP Integrated Monitoring and ICP Waters
- Any suggestion welcome !